



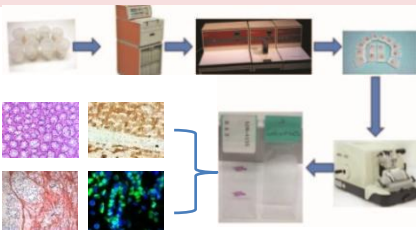
VitroVivo™ Histo/Pathology and LCM Services

Why Choose VitroVivo™ Services ?

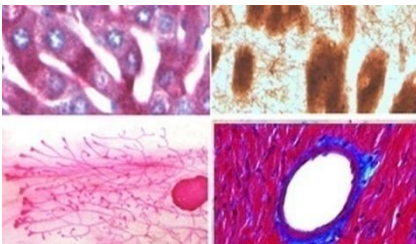
- Full histology, molecular histopathology and LCM services
- High quality and competitive pricing
- Turnaround : 3-5 days after we receive the order
- Expert evaluation
- State-of-the art Arcturus XT™ LCM System and histology Lab facility
- Free pickup for local customers

Our Services

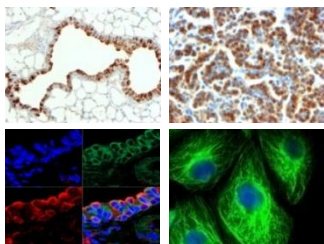
1. Routine Histology and Cryotomy



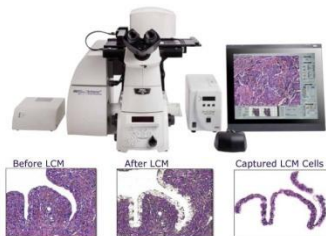
2. Special Staining



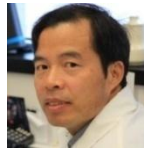
3. Immunostaining (IHC/IF)



4. Laser Microdissection



Histology and Molecular Pathology Expert



Johnson Wang, MD, PhD

- ❖ 16-years of hand-on experiences in histology and molecular histopathology, LCM, animal model, cancer research and stem cells at NIH, university and biotech companies in USA.
- ❖ Over 80 peer-reviewed publications.
- ❖ Former director of Division of Pulmonary Medicine, Guilin Medical University in China

Advisory Board Pathologists



Mike Emmert-Buck, MD, PhD

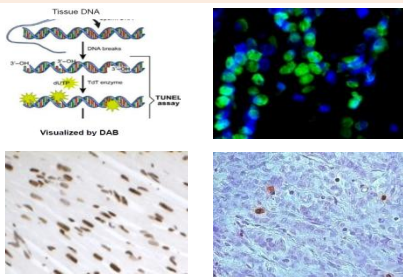
- ❖ World well known physician-scientist.
- ❖ 20 years as a principal investigator at NIH.
- ❖ Over 200 publications.
- ❖ Inventor on 20 allowed or submitted patent applications.
- ❖ Former Chief, PGU, Laboratory of Pathology and Director, LCM Core Laboratory at NIH.
- ❖ Developed laser capture microdissection (LCM).
- ❖ Expertise in experimental pathology and precision medicine.



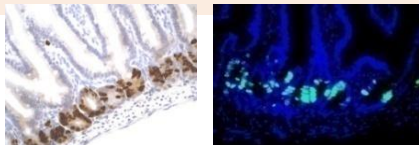
John W. Gillespie, MD

- ❖ Former principal scientist at NIH/NCI.
- ❖ Contributed to the invention of LCM at NCI/NIH.
- ❖ Over 60 publications including over 30 publications entailing use of LCM.
- ❖ Co-editor of a textbook entitled "Dissecting the Molecular Anatomy of Tissues: Principles and practice," Springer (Heidelberg).
- ❖ Expertise in histological interpretation of tissue, LCM and molecular pathology.

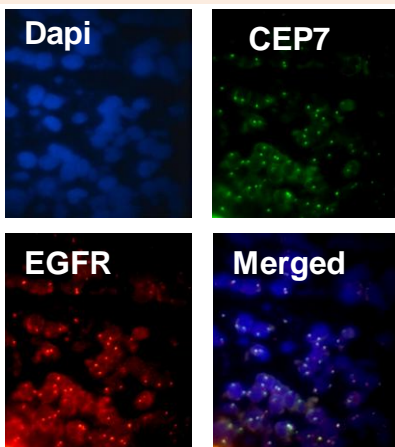
5. In Situ Apoptosis (TUNEL)



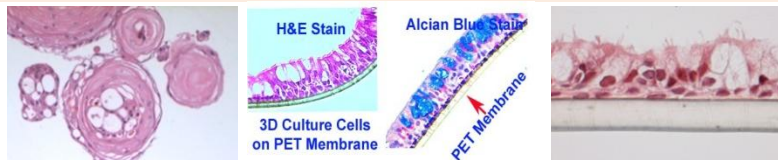
6. In Situ BrdU Cell Proliferation



7. Fluorescent in Situ Hybridization (FISH)



8. FFPE /Cryotomy Services for 2D, 3D or Organoid Culture Cells

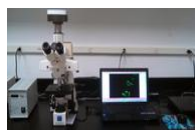


9. DNA, RNA and Protein Isolation from FFPE or LCM Samples



- DNA straction from FFPE or LCM samples
- RNA/miRNA isolation from FFPE or LCM samples
- Protein isolation from FFPE or LCM samples

10. Histology Image and Analysis Services



- Digital image
- Histopathologic scoring
- IHC/IF and TUNEL visual scoring
- Delineation of tissue regions of interest

11. Histopathology Slide Review by Certified Pathologist



- Histological interpretation
- Microscopic description
- General experimental pathology, reporting and description
- Review FISH, IHC/IF and histochemistry slides.
- Histo/pathological description for Publication

How to Order VitroVivo Histology Services?

- Step 1:** Fill the Service Request Form and email to: service@vitrovivo.com. We will send a quote to you.
- Step 2:** For local customers, we will go to your lab to pick up your samples. For non-local customers, please ship your samples to VitroVivo Biotech, 9605 Medical Center Dr., Suite 315, Rockville, MD 20850.
- Step 3:** After we receive your order, we will email a sales order to you or your purchasing agent.
- Step 4:** We will deliver or ship your service products to you in 3-5 days.
- Step 5:** An invoice will be sent to you or your purchasing agent.

Our Clients

